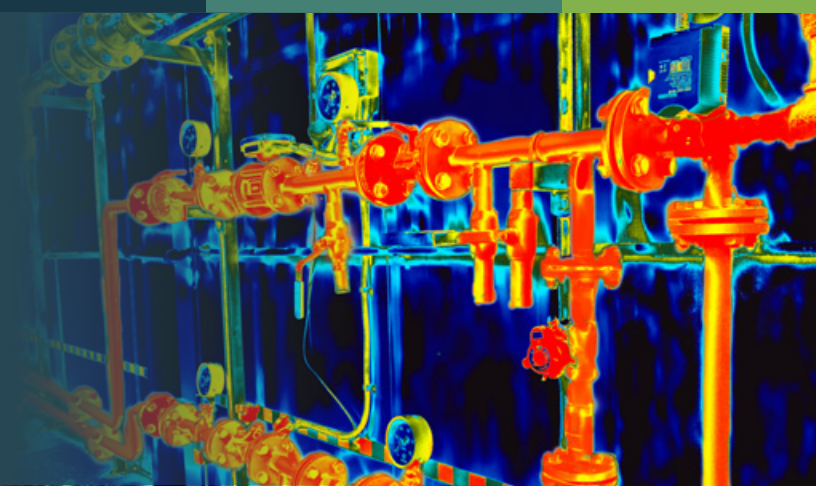




Energy Manager

Energy Usage Analysis and Reduction for Manufacturers

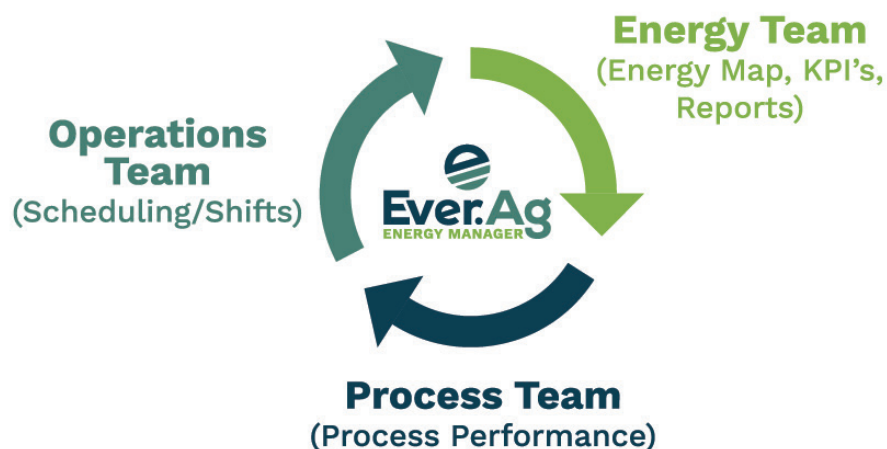


The Energy Manager Platform

A unique web-based monitoring and reporting application that utilizes real and Virtual Metering (Patented) technology. The solution leverages your site's existing infrastructure, such as a Building Management System or a Process Control system, to translate the raw process data into energy consumption information.

Through this unique method, Energy Manager enables you to identify energy consumption and costs for a single device right up to building and equipment levels. Capture this data without investing in new hardwired meters or infrastructure.

With Energy Manager at the core of your sustainability program, you'll reap the benefits of a cost-effective solution offering targeted analysis to activities that consume utilities versus simple utility audit software. The software also allows historical reviews to drive energy, emission and cost reductions across your organization at startup.



Energy Manager allows for the creation of complete energy map profiles, carbon emission scoping, and cost center assignment for buildings and equipment. Utilizing the latest web technology, Energy Manager analysis and reporting tools empower you to identify and reduce your consumption and costs like never before. With Energy Manager, sustainability will become a managerial and Operational Performance Indicator that creates a vital monitored component of day-to-day business.

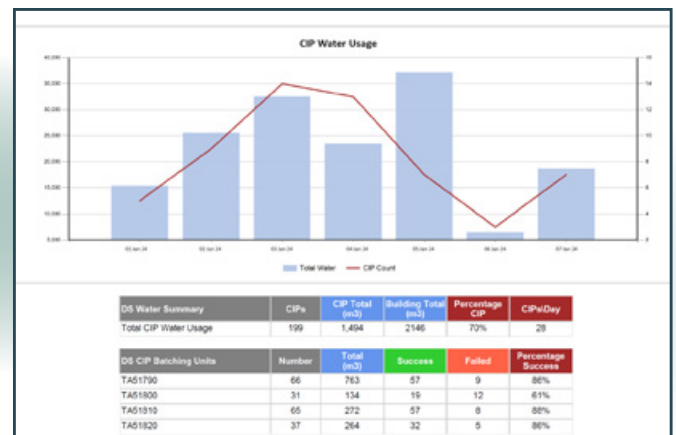
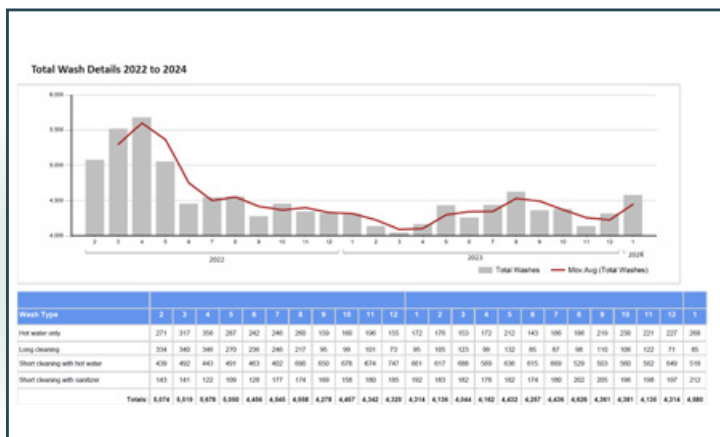
Get in Touch - connections@ever.ag

Batch Analytics - Process and CIP

Utilizing Control and Historian System data enables Energy Manager's unique virtual metering technology to connect and map Process and CIP batch energy and utility consumption down to equipment and process steps. As a result, end users receive a new data set that can provide a targeted continuous improvement strategy based on actual utility consumption and system performance.

- Map utility consumption at each process stage.
- Connect thermal loads, water, steam and electrical usage to Process and CIP cycles.
- Identify and analyze underperforming equipment and excessive utility consumption.
- Target and profile areas and equipment with new Energy Performance Indicators (EnPIs) to set equipment usage baselines and metrics.
- Track consumption reduction and continuous performance via reports and alerts.

Process and CIP Reports



Modular Analysis



POWER



WATER



STEAM



OIL/GAS

Monitor and review all your energy and emission information, whether modular or combined. All information is organized into relevant streams to target and focus actions in a coordinated manner.



From industry-leading technology solutions to in-depth market analysis, Ever.Ag partners with you to successfully navigate the complexities of operating a dairy business today.